

# **One-port surgery in gynecologic oncology**

**Tae Joong Kim**

**Sungkyunkwan University School of Medicine  
Samsung Medical Center**

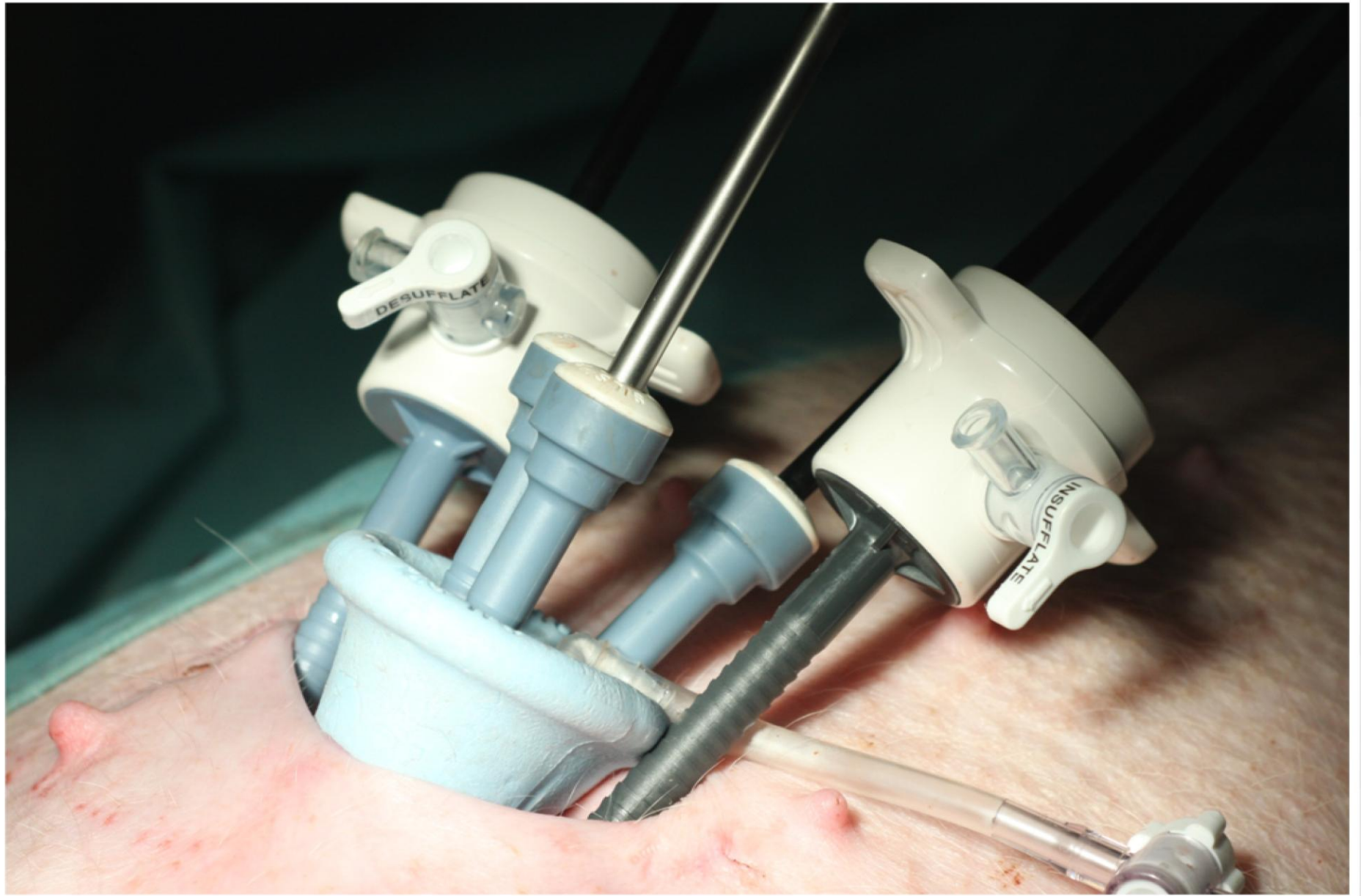
# LESS

**(LaparoEndoscopic Single Site surgery)**

Robotic single  
site surgery

Endoscopic  
single site surgery

**One-port surgery/  
SPA laparoscopic surgery**



# Contents

- **Goals & advantages of LESS**
- **LESS in gynecologic oncology**
- **Video clips (PLND, SILS™)**

# Goals of U-LESS

*to improve patient outcomes by minimizing postoperative discomfort, decreasing convalescence time and optimizing cosmetic outcomes through a hidden tiny incision in the umbilicus*

# Advantages of LESS

## vs. conventional laparoscopy

### Experienced or Proven

- Cosmetics → no argument, no data
- Specimen extraction

### Potential or Hypothetical

- Postop. Pain → a few data
- Quicker recovery
- Less wound infection or bleeding
- Less SQ emphysema by wound retractor

# **LESS in gynecologic oncology**

- **Risk-reducing salpingo-oophorectomy (RRSO)**
- **Total hysterectomy for precancerous lesion**
- **Staging operation for early-stage ovarian/endometrial cancer**

# Laparoendoscopic single-site surgery (LESS) in gynecologic oncology: Technique and initial report

Amanda Nickles Fader, Pedro F. Escobar \*

*Gynecol Oncol. 2009 Aug; 114:157*

Patients (N= 13)	Age	BMI	Diagnosis/procedure	Laparoscopic or robotic?	Operative time (min)	Hospital stay (days)
1	59	27	Breast cancer, BRCA1+, on tamoxifen: risk-reducing extrafascial hyst/BSO	Robotic	178	1
2	39	23	Papillary serous carcinoma of the ovary, Stage IB, elevated CA-125: retroperitoneal right PLN biopsy and peritoneal biopsies	Robotic	45	0
3	36	24	Breast cancer, BRCA2+: risk-reducing BSO	Robotic	65	0
4	49	20	Breast cancer, BRCA1+, on tamoxifen: risk-reducing extrafascial hyst/BSO	Robotic	145	1
5	60	26	Grade 1 endometrial CA: extrafascial hyst/BSO/washings/PPALND (n= 11 nodes excised)	Laparoscopic	168	1
6	53	29	BRCA1+, mucinous cystadenoma: BSO/washings	Laparoscopic	50	0
7	34	32	7 cm adnexal mass, elevated CA-125, endometrioma: extensive lysis of adhesions, RSO/washings	Laparoscopic	45	0
8	46	30	Enlarging 7 cm ovarian complex cyst: BSO/washings	Laparoscopic	40	1
9	40	28	3 cm dermoid cyst: right ovarian cystectomy	Laparoscopic	60	1
10	47	29	Stage IV ER/PR+ breast cancer, h/o multiple abd surgeries: extensive lysis of adhesions/enterolysis/BSO	Laparoscopic	105	1
11	44	28	Stage IV ER/PR+ breast cancer: BSO and left mod radical mastectomy and right prophylactic mastectomy	Laparoscopic	65	1
12	62	37	Granulosa cell tumor-Stage IA: BSO, retroperitoneal PPA LND (n= 13 nodes excised) staging, omentectomy, lysis of adhesions	Laparoscopic	175	2
13	64	31	Stage IV breast cancer, BRCA 1+: BSO, washings	Laparoscopic	35	0

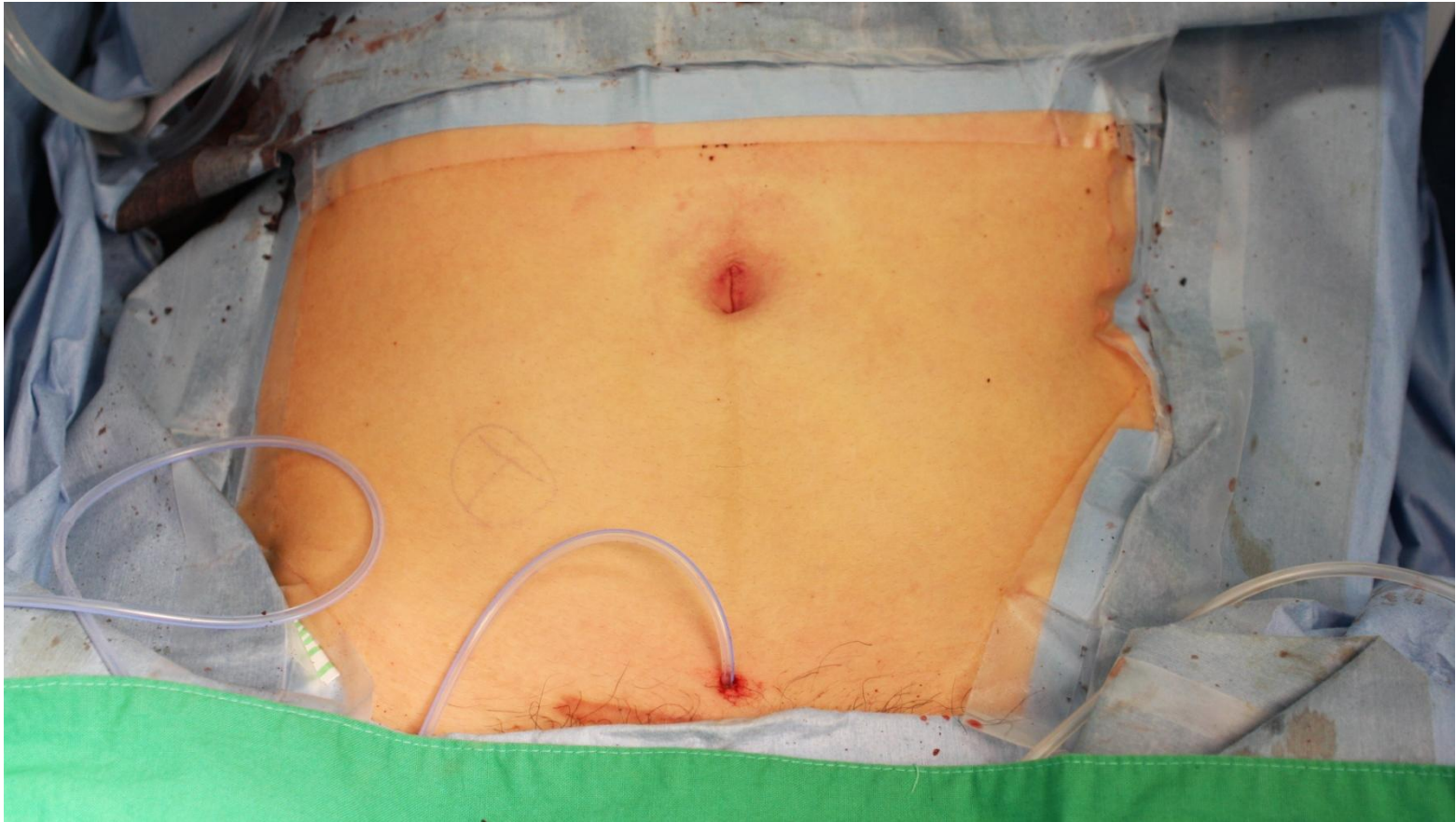
2 Staging operation including LND: excised node 11, 13, respectively



# Requiring procedures

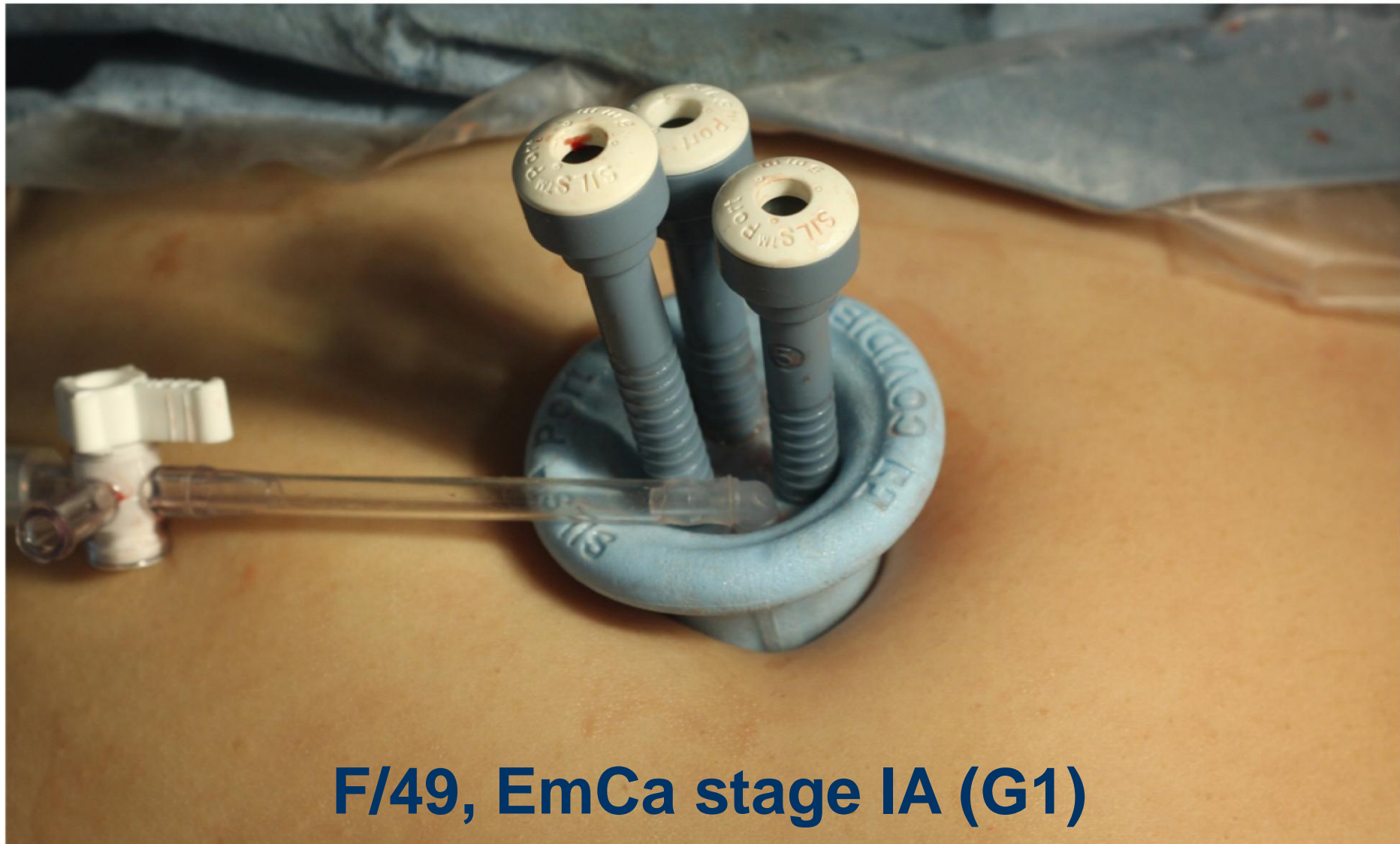
- **Single-port access platform (homemade port, SILS port, Octoport...)**
- **Hysterectomy (TLH, LAVH)**
- **Salpingo-oophorectomy**
- **Omentectomy**
- **LN dissection**

# Staging Operation c homemade port LAVH, BSO, Infracolic OM, Appe, PLND



F/34, previous C/S 2 times, BOT (mucinous) on frozen

# Staging Operation c **SILS™** Port LAVH, BSO, PLND, washing cytology



**F/49, EmCa stage IA (G1)**

# Research about LESS in gynecology

**Feasible → Comparable → Beneficial**



Malignant



Benign

